

SPECIFICATIONS

General Particulars			
Nominal Rating:	5,000m with 5½" DP	Max Hook Load:	750,000lbs
Nominal Class:	1,500hp	Pressure Rating:	5,000psi
Drillers Controls:	AMPHION Integrated	Rig Power:	VFD AC Drive
Drilling Moving System:	Walking system optional	PVT/Drilling Recording:	Rig Sense/Well Data
Substructure			
Make:	NOV	Type:	Prime
Rotary Loading:	1,300,000lbs	Setback Loading:	575,000lbs
RT Height:	28'	Clear Height:	24'
Mast			
Make:	NOV	Type:	Prime
Height:	142'	Gross Nom Capacity:	750,000lbs
Max Lines:	12	Max Hook Load:	750,000lbs
Drawworks			
Make:	NOV	Model:	DSGD 375ton
Max Input HP:	1,500hp	Drilling Line:	1⅜"
Auxiliary Brake:	Spring callipered disc	Main Brake:	AC Resistive
Drive:	1,500NP M632-UUT		
Top Drive			
Make:	Varco	Model:	TSD-11SH 1,100hp
	Softspeed	Max Rotating Load:	500ton
Max Rotation:	228rpm	Max Cont Torque:	51,000lbs
Auxiliary Equipment			
Iron Roughneck:	ST100 4"-9¾"	Rotary Table:	37½"
Hydraulic Cathead:	2 x HC-26EV	Hydraulic Slips:	PS21
Catwalk:	Pipe Cat PC-5-47	Hydraulic Elevators:	BX4-50
Racking Board:	Remotely Operated STV	Casing Running:	NOV CRT 350
Mud Pump			
Qty:	3 x 1,600hp	Model:	FD1600
Make:	NOV	Max Pressure:	5000psi
Type:	Triplex	Max Piston:	7"
Stoke:	12"		
Mud System			
Active Capacity:	1290bbls	Premix Capacity:	500bbls
Shakers:	3 x VSM 300 Multisizers	Trip Tank:	2 x 60bbl
Well Control System			
Ram BOP:	Shaffer Double Gate LXT 13 5⁄8" 10,000	Choke Manifold:	4 1⁄16" 10,000 (2 x Remote choke)
Ram BOP:	Shaffer Single Gate LXT 13 5⁄8" 10,000	Control System:	NOV 6 station
Spherical BOP:	Shaffer 135⁄8" 5000psi	BOP Handling:	BOP Transporter and 2 x 25ton Hoists
Power Generation System			
4 x 3512C Baylor 1225kw, 1200rpm, VFD AC Drive			
Drill String			
Size:	5½" S135 GPDS55 21.9lb	Length:	5000m
Size:	4" S135 GPD538 14lb	Length:	2700m

IDEAL
PRIME RIG



IDEAL PRIME RIG

Overview

- ▶ Compliant with Australian, API and highest industry standards.
- ▶ The technology of this rig sets it apart from other drilling rigs with enhanced mobility, unparalleled control, increased torque, enhanced safety and environmental features.
- ▶ The rig has automation at the core of its design, reducing manual handling and significantly reducing risk to rig crew.
- ▶ High pressure and high temperature capability.
- ▶ The rig has the option (when fitted) of being able to walk on both X and Y axis on multi well pads.

Features

- ▶ Unparalleled control: the AMPHION Drilling Control System integrates rig systems and provides control over the drawworks, mud pump, top drive, and power management, all from the safety of the climate-controlled driller's cabin. The AMPHION system allows simultaneous monitoring of drilling functions, allowing for adjustments to maintain consistent drilling, maximum BOP and longer bit life.
- ▶ Increased power and torque: the Ideal Prime Rig features the TDS-11SH 500 ton top drive, delivering more torque and power (1,100 horsepower) in a smaller package. It has a 750,000 pound hookload, to manage drilling depths of 5,000 metres.
- ▶ The rig is fully automated to improve efficiency and reduce risk exposure for the drilling crew. The automated system includes the iron roughneck (ST100), mechanical derrickman (STV), automated catwalk (Pipe Cat), slips and elevators.
- ▶ Designed with a focus on rig move efficiency, the mast and substructure can be easily aligned and pinned during rig up and most of the rig can be assembled or pulled down without the use of cranes.
- ▶ Highly optimised hydraulic system and multi-quick disconnect plates: minimised number of line/leak points, reduced time to connect/disconnect hydraulic lines and reduced errors. The rig is completely modular and electrical wiring is integral to each skid so cables do not need to be removed for moves.

Performance

- Consistent performance ahead of client time vs depth curves.
- Mechanical efficiency <3% rig down time.
- Rig move capability 7-10 days.

Easternwell will only operate rigs where a high level of safety, equipment and operational performance can be maintained.



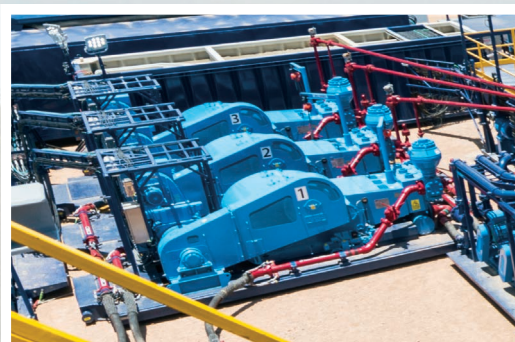
Drillers cabin AMPHION HMI.



Standard transfer vehicle (automated derrickman).



TDS-11SH top drive with automated slips and elevators.



3 x 1,600hp mud pump system.



3 x VSM multisizer shale shakers.



ST100 Iron Roughneck.